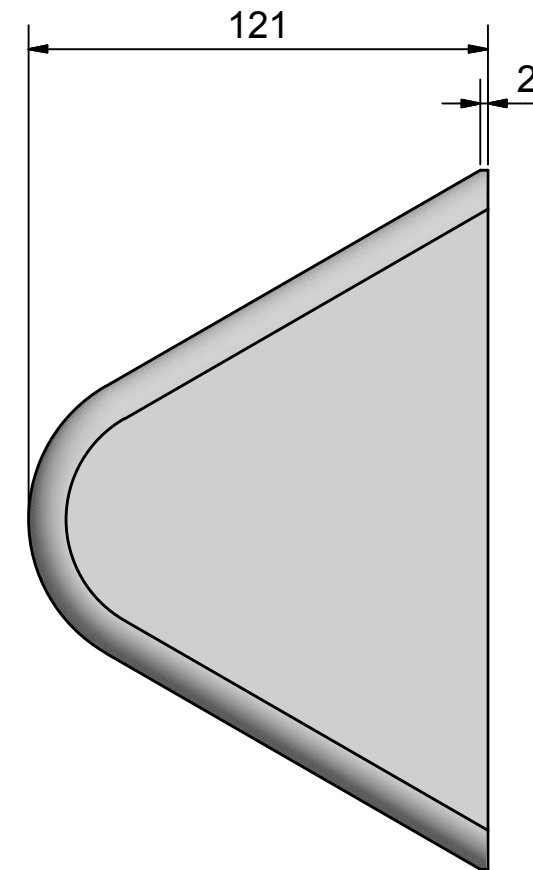
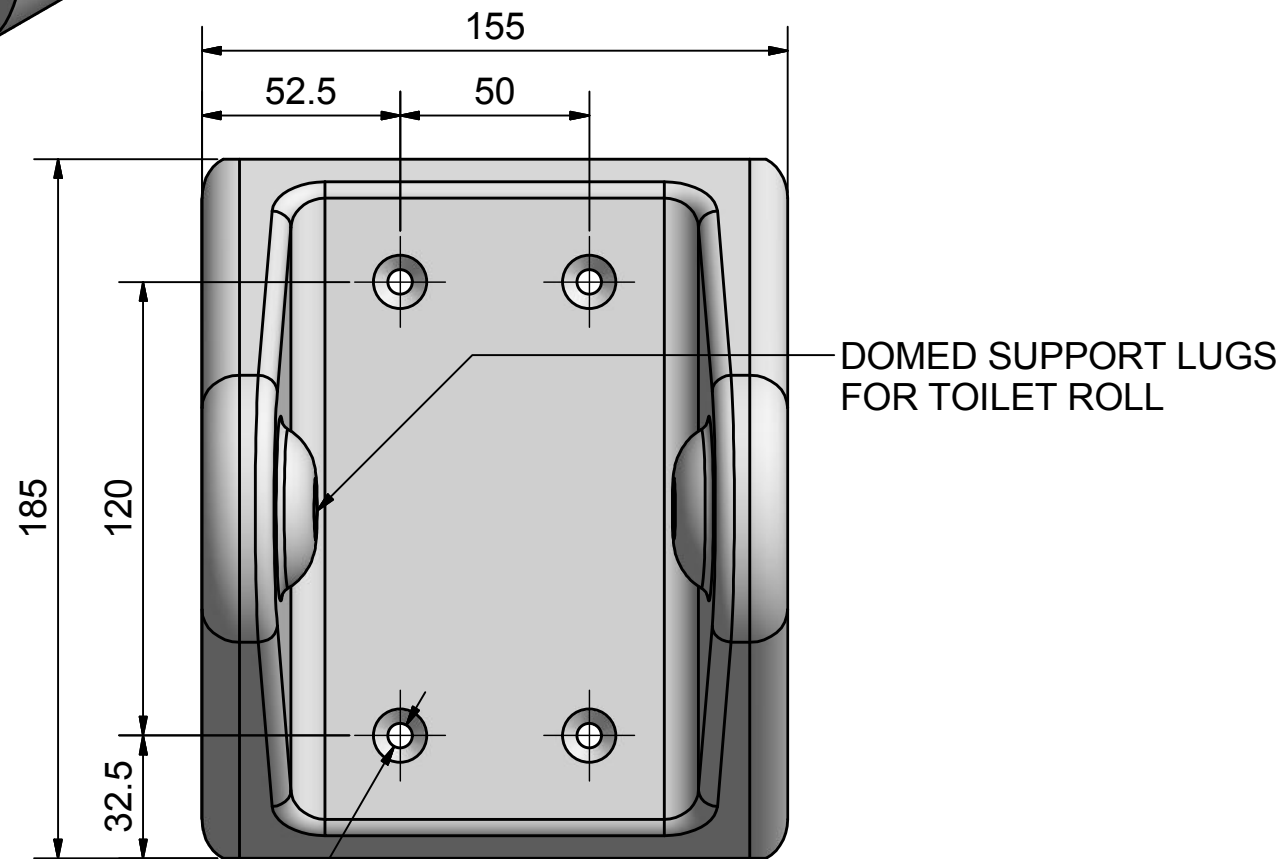
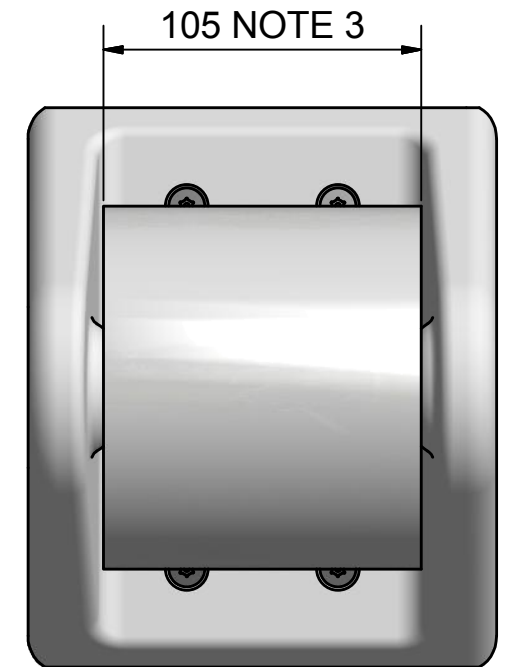
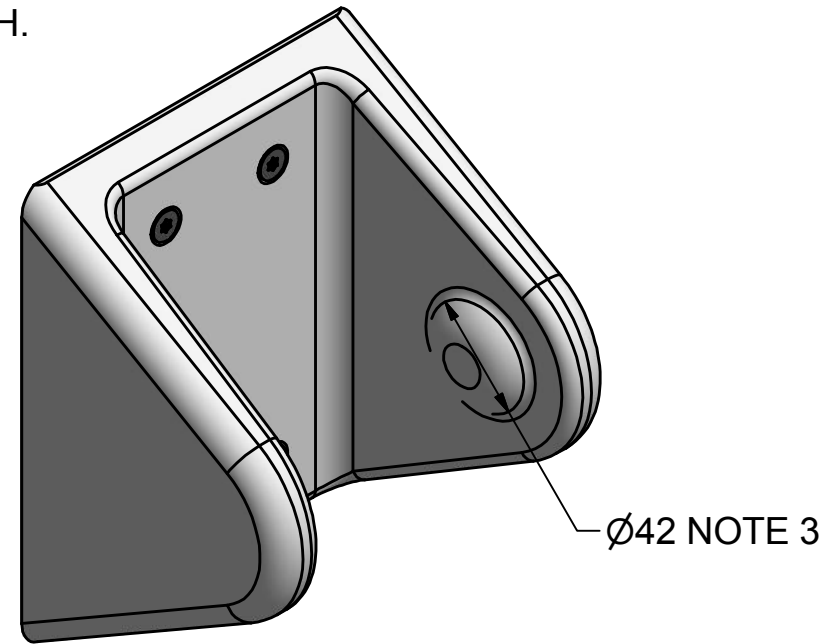
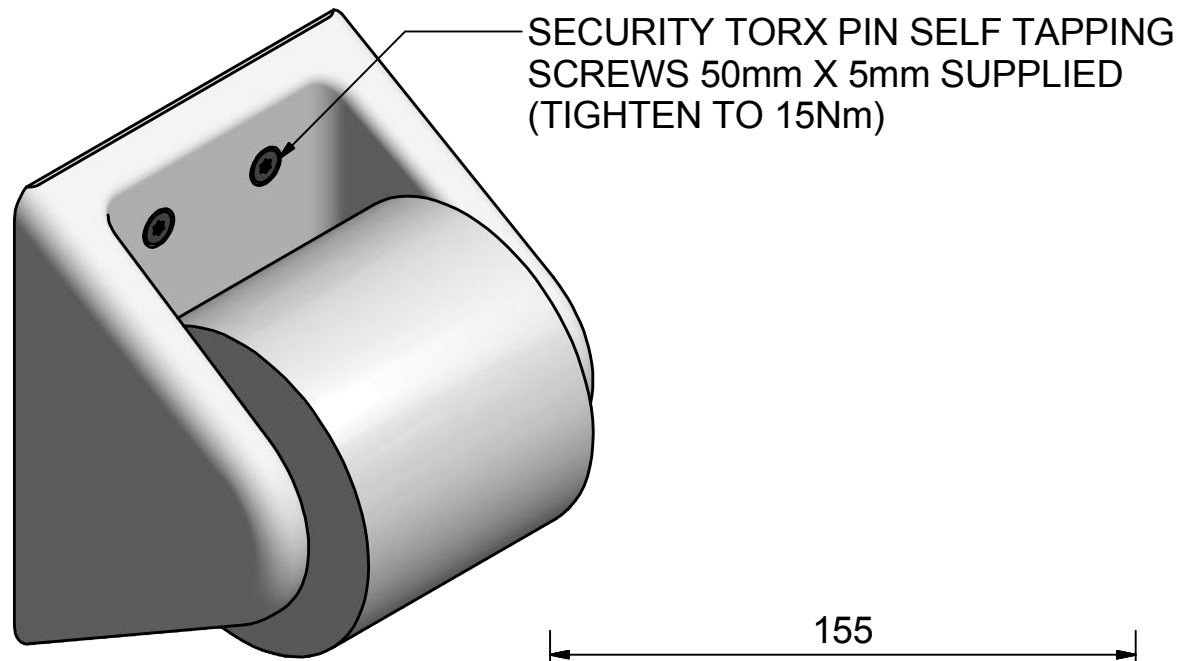


NOTES:

1. THE 2mm FLAT IS TO FACILITATE THE APPLICATION OF AN ANTI PICK MASTIC. THIS SHOULD BE APPLIED AND THEN PROFILED, USING A SUITABLE TOOL, TO FOLLOW THE ANGLE OF THE TOP OF THE TOILET ROLL HOLDER.
2. THE TOILET ROLL HOLDER MUST BE MOUNTED IN THE ORIENTATION SHOWN.
3. THE HOLDER SUITS TOILET ROLLS WITH A 42mm MIN ID AND 105mm MAX WIDTH.

REVISION HISTORY				
REV	DATE	DESCRIPTION	BY	CHKD
2	06/07/2015	NOTES REVISED	RD	DB



Ø6.5 CSK HOLES FOR WALL FIXINGS

© 2015 Copyright THIS DRAWING IS THE PROPERTY OF WALLGATE LIMITED AND IS ISSUED ON THE STRICT UNDERSTANDING THAT THE INFORMATION CONTAINED WILL NOT BE REPRODUCED, COPIED OR USED WITHOUT PRIOR AGREEMENT OF WALLGATE LTD.

Wallgate

TITLE: TOILET ROLL HOLDER

Drg No: TRH-02

Model/Client/Project:

MATERIAL:

FINISH:

Limits: (unless stated)
 ± 0.25mm (sheetmetal)
 ± 0.10mm (machined)
 ± 2.00mm (pattern)
 ± 5.00mm (moulded)

All dimensions in mm,
 All angles 90° (unless stated)

Scale: NTS

A3 3rd